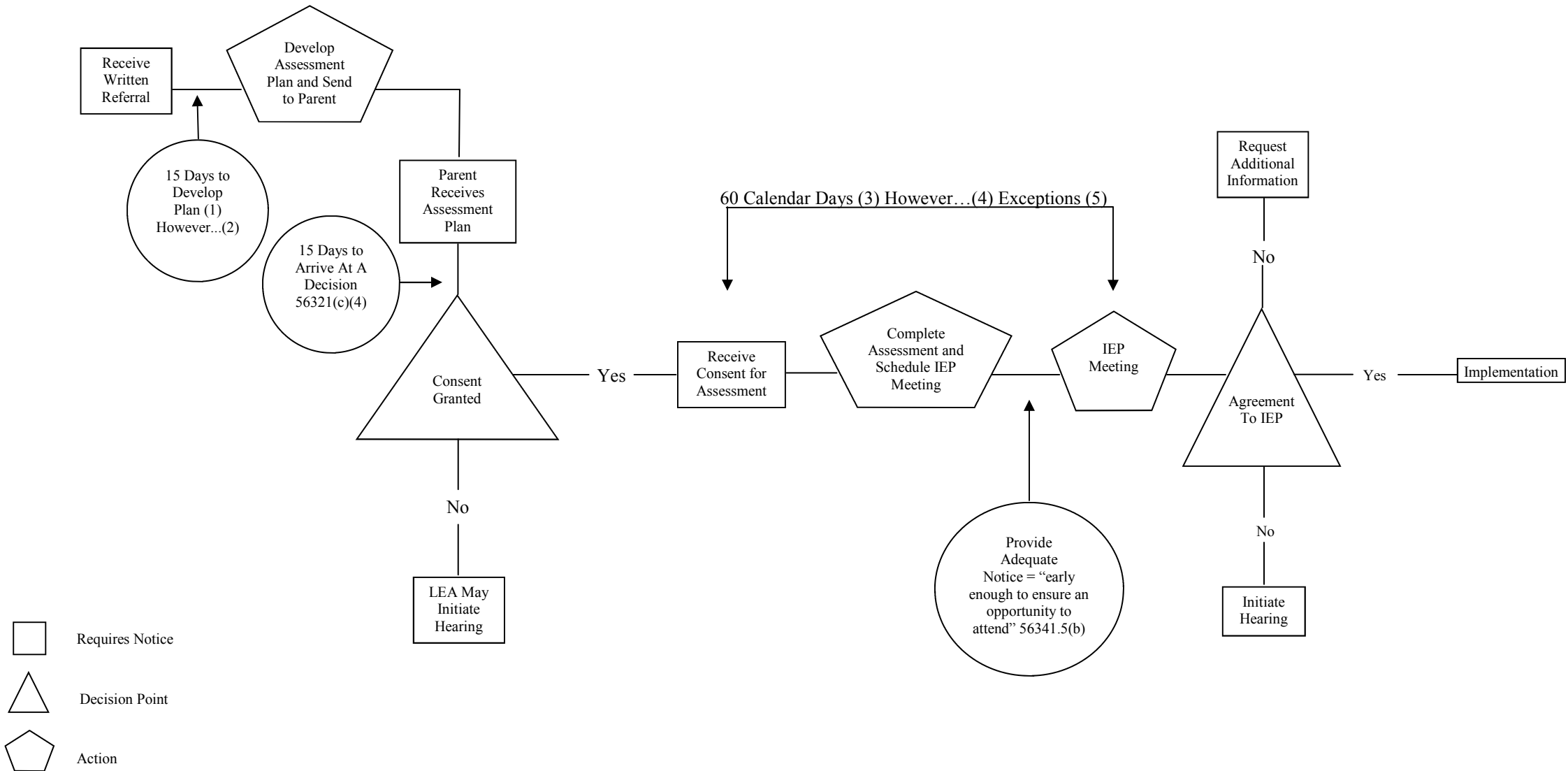


IEP TIMELINE



- (1) Not counting days between the student’s regular school year OR school vacations *in excess of* 5 days. Ed Code 56321(a)
- (2) When a referral is made 10 days or less prior to the end of the regular school year, the assessment plan shall be developed within 10 days after start of the next school year. Ed Code 56321(a)
- (3) Not counting days between the student’s regular school year OR school vacations *in excess of* 5 school days. Ed Code 56344(a)
- (4) When a referral is made 30 days or less prior to the end of the regular school year, the IEP shall be developed within 30 days after start of the next school year. Ed Code 56344(a)
- (5)
 - i. Parent can, in writing, extend the timeline. Ed Code 56344(a)
 - ii. FOR AN INITIAL REFERRAL ONLY, if a referral is made in one LEA but student moves, the new LEA does not have to adhere to the 60-day timeline **IF** (a) the new LEA is making “sufficient progress to ensure a prompt completion of the assessment?” **AND** (b) the parent and new LEA agree to a specific date for completion of assessment. Ed Code 56302.1(b)(1)
 - iii. FOR AN INITIAL REFERRAL ONLY, if the parent “repeatedly fails or refuses to produce the child for the assessment.” Ed Code 56301.1(b)(2)